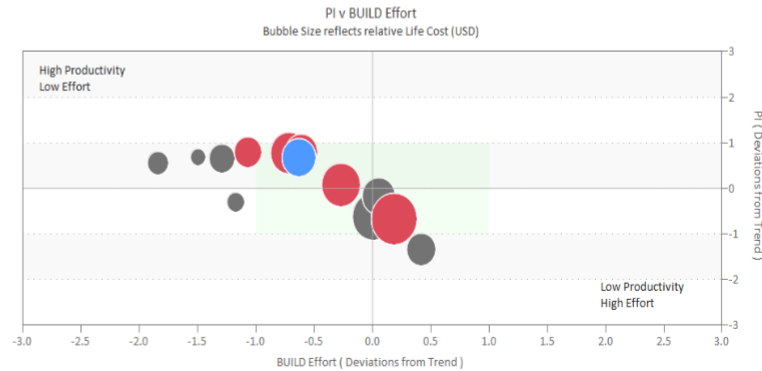
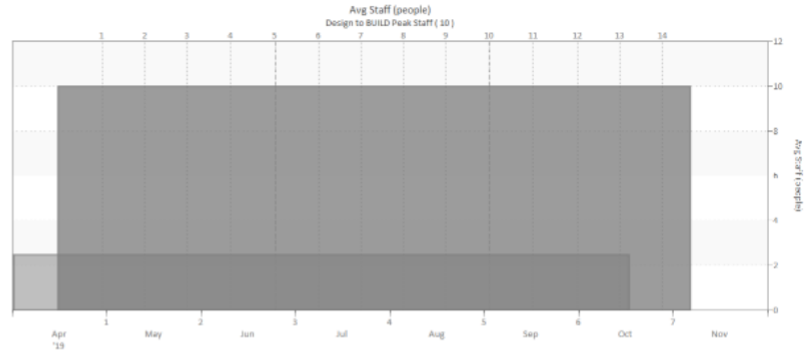




Sprints Required

Forecast Sprints Remaining

Identify Risk Reduction Strategies



# Perspective and Predictability in Agile Release Planning



# Speaker

**Laura Zuber,  
Lead Support Representative and Instructor, CSM, SA**

Laura Zuber has 25 years of experience in software development consulting, training, and support. She has conducted training and coaching sessions for all QSM SLIM-Suite tools and helped customers implement SLIM across a wide variety of processes and platforms. Laura has managed software development projects, served as a senior software process improvement specialist, performed process assessments, designed and implemented best practices, and authored numerous training programs. She is a Certified Scrum Master and SAFe Agilist.

# Agile Transformation Is Challenging

---

- What are the Teams and Trains working on?
- What is our Capacity?
- Where can we cut Scope to deliver at lower Cost?



# When to Release?

---



Difficult to visualize  
impact on capacity or  
resource planning



Well planned release



Difficult to visualize  
risk / benefit tradeoffs  
of business decisions

Leverage Data for Comprehensive Analysis  
Effectively Communicate Scope/Cost/Schedule Tradeoffs

# Comprehensive Analysis



# Effective Communication

---



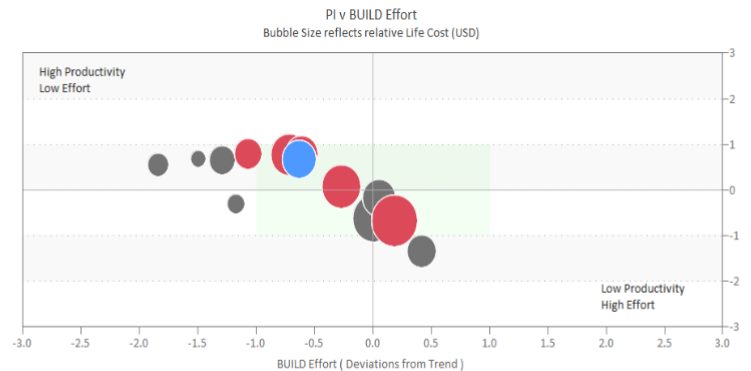
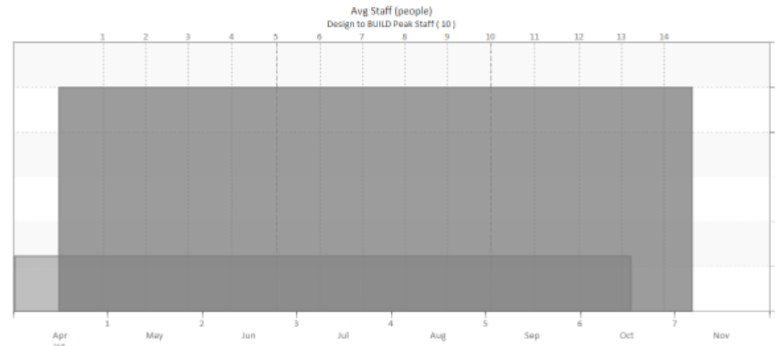
# SLIM-Suite v10.2



Sprints Required

Forecast Sprints Remaining

Identify Risk Reduction Strategies



## PERSPECTIVE

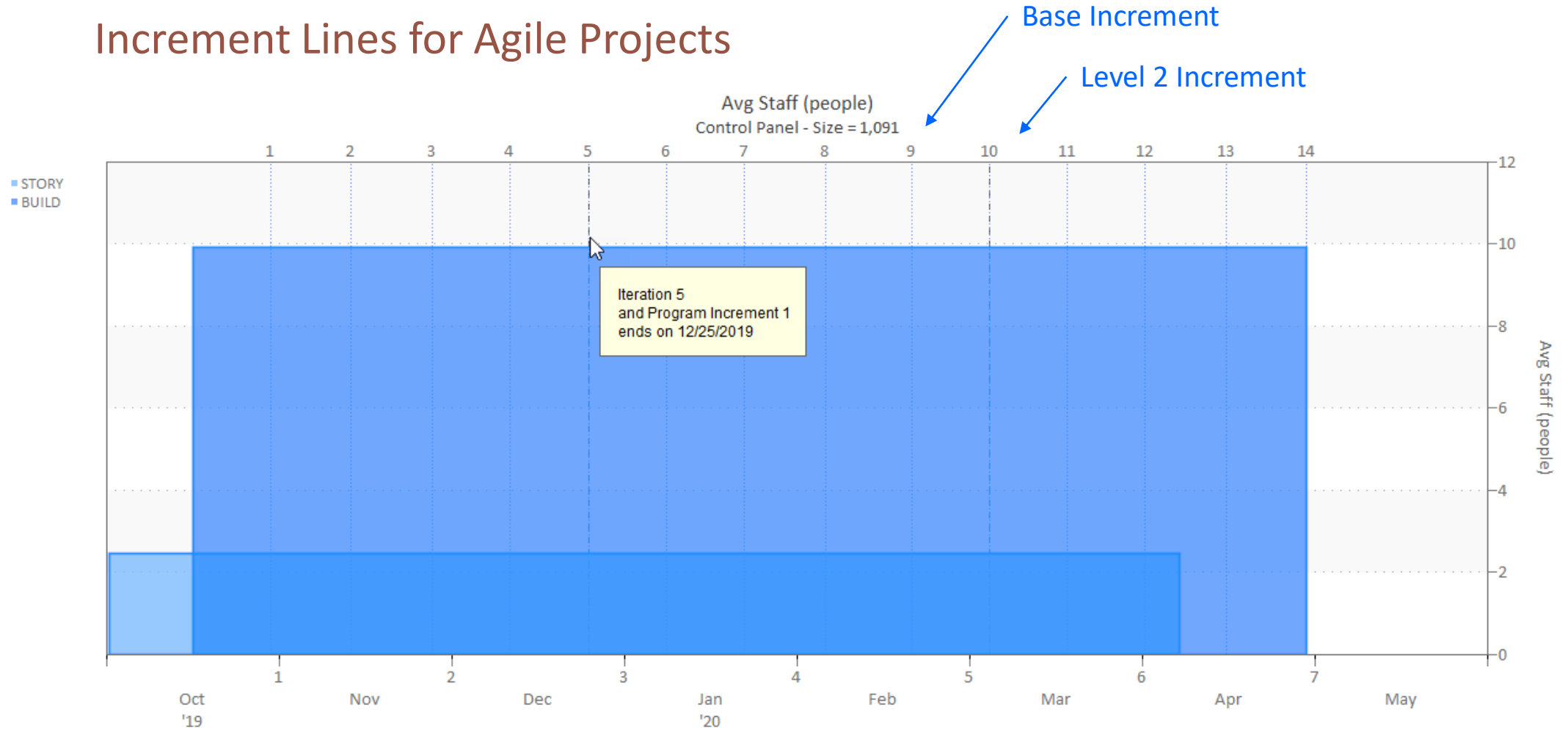
- Picture
- State of one's ideas
- Facts known to one

## PREDICTABLE

- Expected based on previous or known behavior
- Making it possible to know in advance

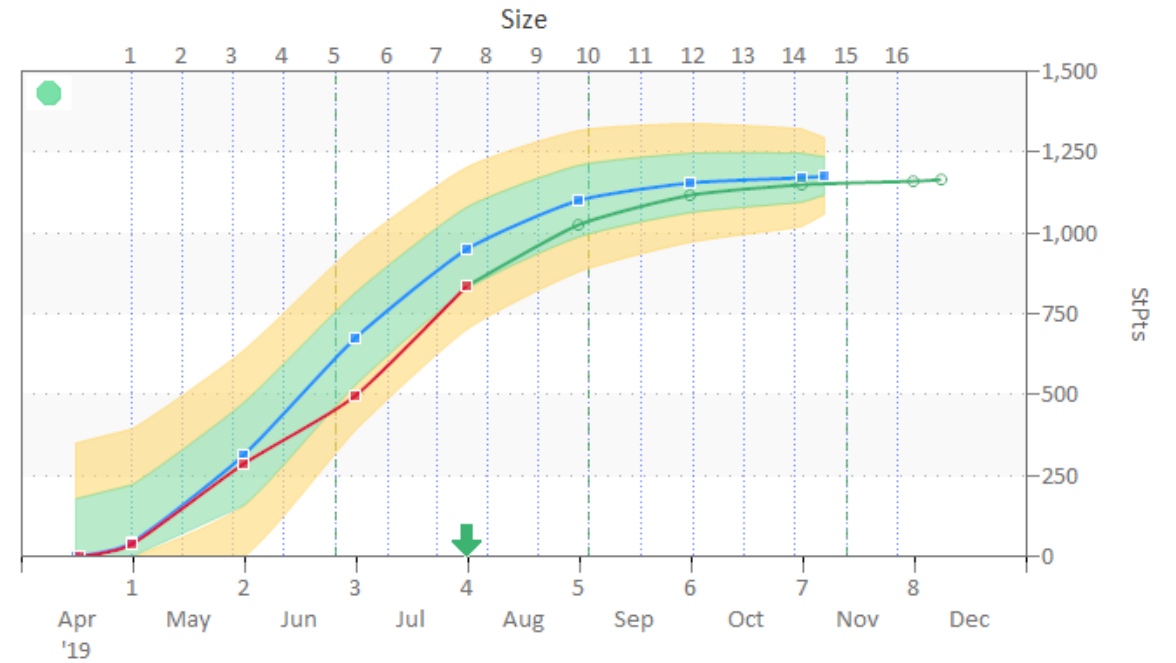
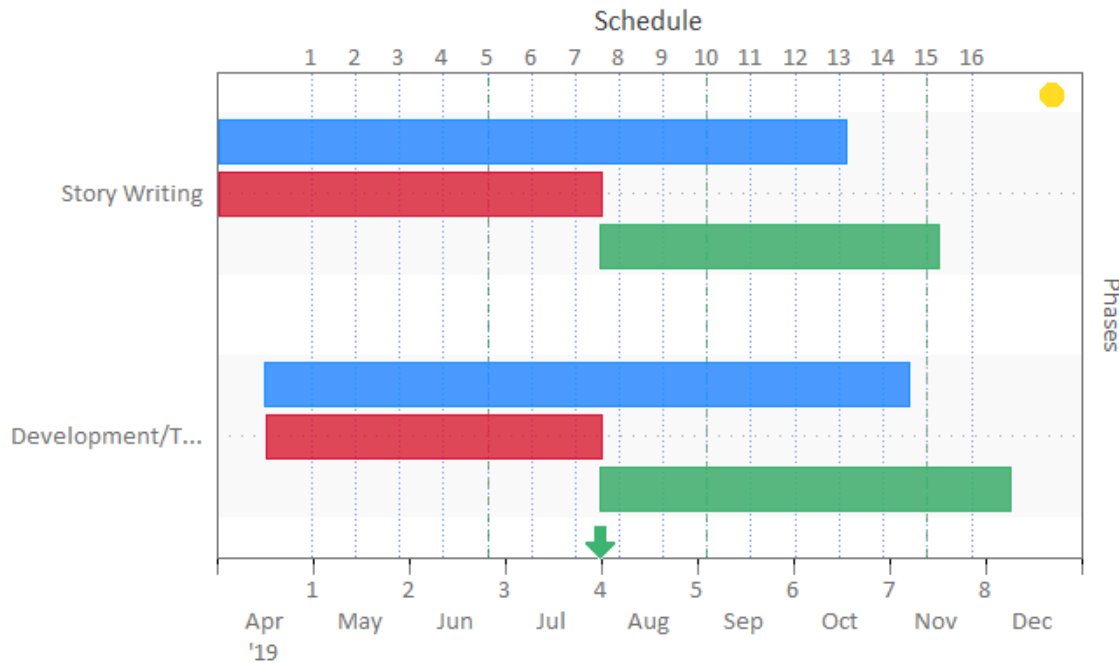
# Release Defining Features

## Increment Lines for Agile Projects





# Increment Lines for Tracking & Forecasting



■ — Current Plan

■ — Actuals

○ — Current Forecast

■ Green Control Bound

■ Yellow Control Bound

# Iterations Data on Time Series Chart

## Effort & Cost

Iterations:

Iteration	Date	Weeks From Project Start*	Resources between Iterations		Program Increment	Resources between Program Increments	
			Effort (PHR)	Cost (USD)		Effort (PHR)	Cost (USD)
1	9/29/2019	4	622	80,020			
2	10/13/2019	6	567	81,057			
3	10/27/2019	8	567	81,057			
4	11/10/2019	10	590	84,318			
5	11/24/2019	12	582	83,200	1	2,929	418,673
6	12/8/2019	14	580	82,859			
7	12/22/2019	16	567	81,057			
8	1/5/2020	18	560	80,033			
9	1/19/2020	20	470	67,152			

SLIM-E – Estimate Estimated Effort & Cost  
 SLIM-Control – Plan, Actuals + Forecast

# Agile Increments

---

- Mark the progression of regular development time periods (Sprints, Iterations, ...)
- You specify
  - Name
  - Duration (Weeks)
  - Start and End (for Phases included)
  - Starting #
- Level 2 increments support Agile development at scale (Program Increments, Code Drop, ...)
- You specify
  - Name
  - Cadence (occurs every ? Increments)



# New Project Environment Setting

The screenshot shows the 'Project Environment' dialog box with the 'Agile Increments' tab selected. The 'Agile Increments' tab label is highlighted with an orange box. Below it, a checkbox labeled 'Use this configuration to calculate and display Agile Increment data on time series and Gantt charts/reports.' is checked and also highlighted with an orange box. The 'Base Increment' section contains the following fields: Name (Iteration), Duration (2 Weeks), First increment starts (0 Days after start of Phase 3), Last increment ends at least (0 Days before end of Phase 3), and Start numbering at (1). The 'Level 2 Increment' section contains a checked checkbox 'Use Level 2 increments', Name (Program Increment), and occurs every (5) Iterations. At the bottom right are 'OK', 'Cancel', and 'Help' buttons.

Project Environment

Project Description Environment Reliability Phases Milestone **Agile Increments**

Use this configuration to calculate and display Agile Increment data on time series and Gantt charts/reports.

Base Increment

Name

Duration

First increment starts   after start of

Last increment ends at least   before end of

Start numbering at

Level 2 Increment

Use Level 2 increments

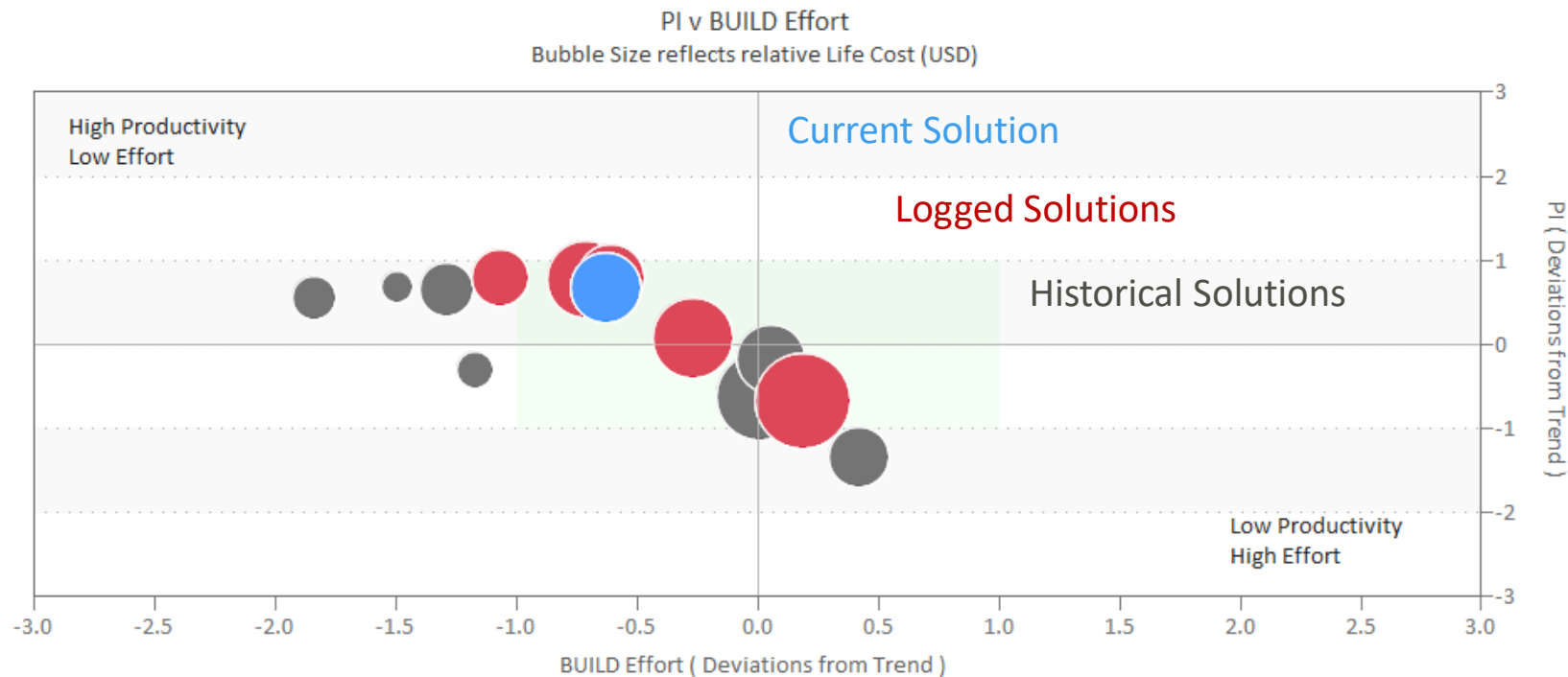
Name

occurs every  Iterations

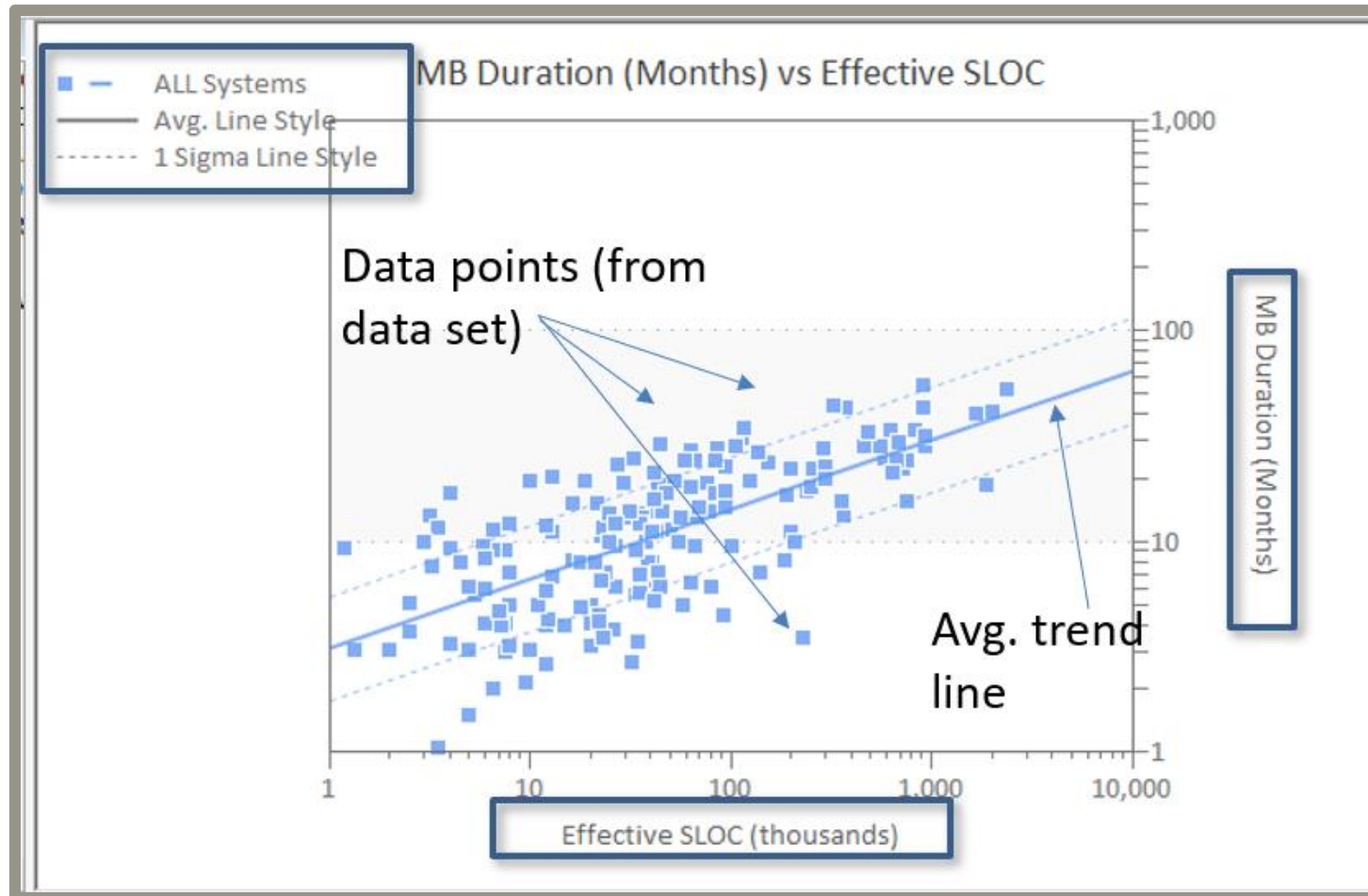
OK Cancel Help

# Release Defining Features

## Quadrant Charts in SLIM-Estimate & SLIM-Metrics



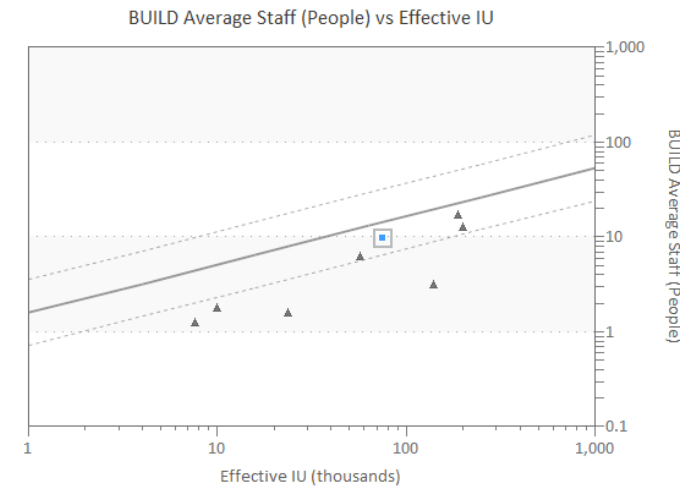
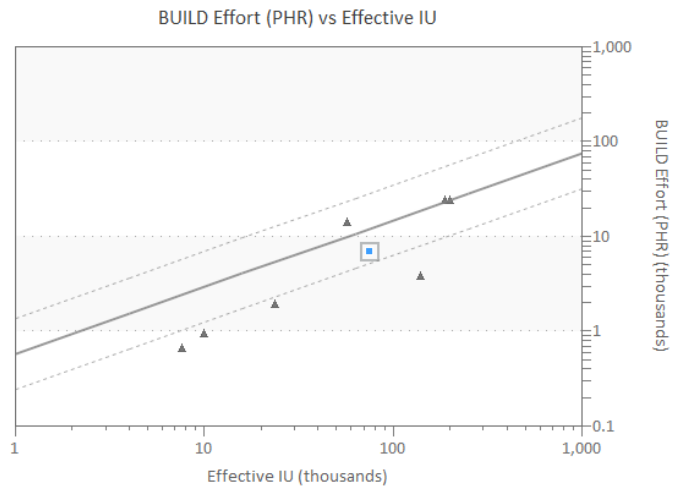
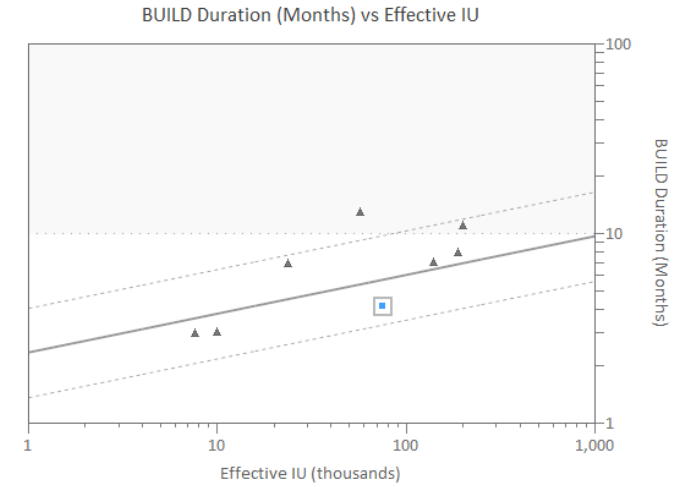
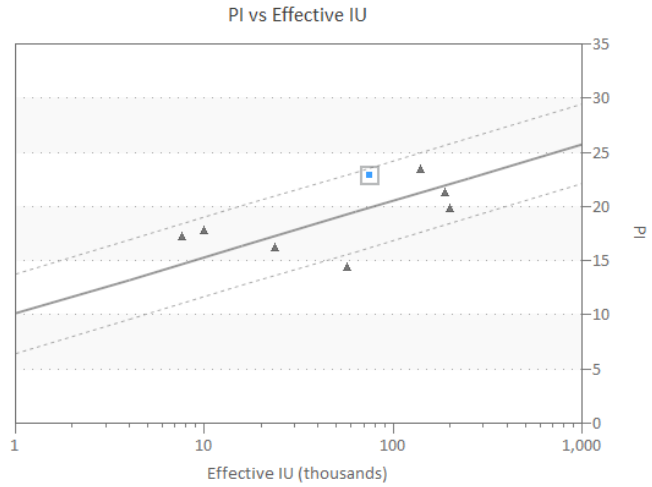
# SLIM Learns From Project Data



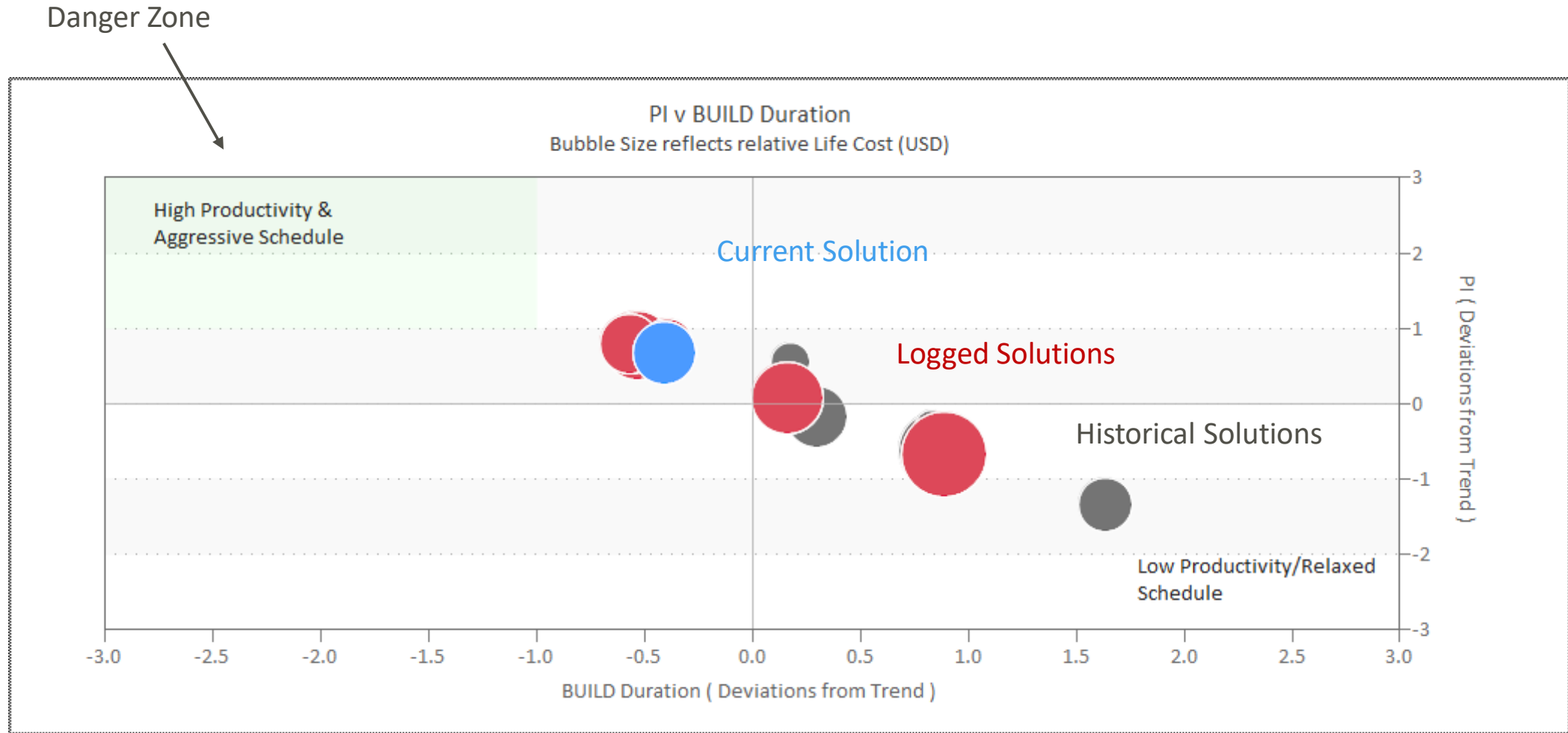
- Performance data from completed projects
  - Effort / Cost
  - Schedule
  - Quality
- Trends show average
  - Industry
  - Your Projects
- Dynamically Tune the Model
  - Dev Method
  - Technology

# Trend Variance Analysis

Compare to History



# Quad Charts in SLIM-Estimate for Risk Assessment





# Estimate Quad Chart Properties

Quadrant Chart Properties

Metrics | Titles | Axes | Data | Report | Layout

Select vertical (Y) and horizontal(X) axis metrics.

**Vertical Axis Metric**  
Basic Information PI

**Horizontal Axis Metric**  
Phase 3 Duration

Examples:  
Duration vs Effort  
Average Staff vs Quality

Size the data points based on the value of this metric.

**Bubble Size Metric**  
Life Cycle Cost

This metric is used to show the relative size of projects according to the metric selected, such as Total Cost or Total Effort.

OK Cancel Help

# Estimate Quad Chart Properties

Quadrant Chart Properties

Metrics Titles Axes Data Report Layout

Horizontal Axis Title

Automatic: BUILD Duration ( Deviations from Trend )

Manual:

Vertical Axis Title

Automatic: PI ( Deviations from Trend )

Manual:

Maximum Axis Value

Automatic

Manual:  Std Devs

Grids

Automatic  On  Off

Target Zone

	Min	Max	
Horz Axis:	<input type="text" value="-3"/>	<input type="text" value="-1"/>	Std Devs
Vert Axis:	<input type="text" value="1"/>	<input type="text" value="3"/>	Std Devs

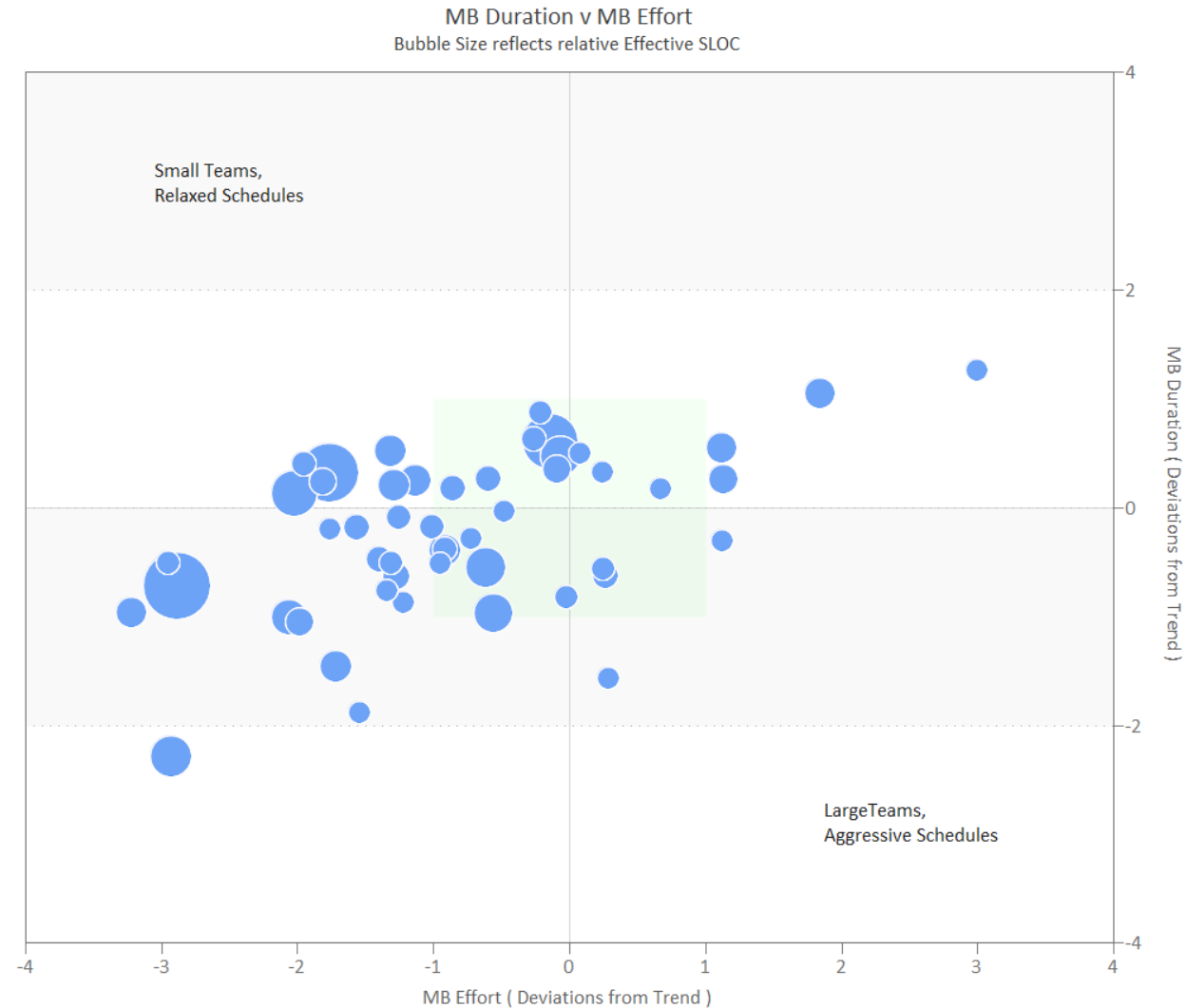
Show a target zone.

OK Cancel Help

# Quad Charts in SLIM-Metrics for Performance Benchmarking

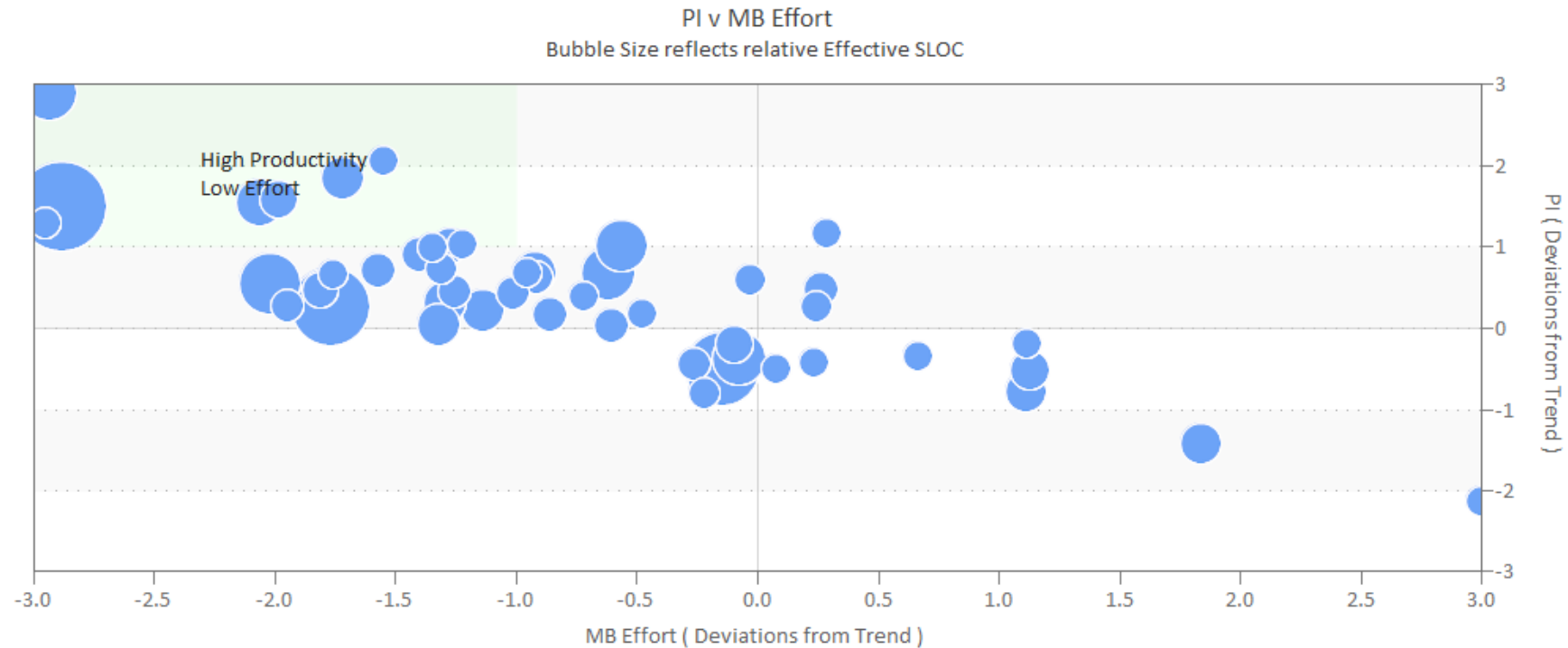
One Data Set

Should have associated  
Reference Group



# Set "Target" to Highlight Safe or Risky

## Atypical Performance



# Images Inform and Inspire

---



**“The Art of the Brick”**  
-- Nathan Sawaya



# Questions?

[www.qsm.com](http://www.qsm.com)

[info@qsm.com](mailto:info@qsm.com)

800-424-6755

PMI PDU claim code:

36702SAG1M